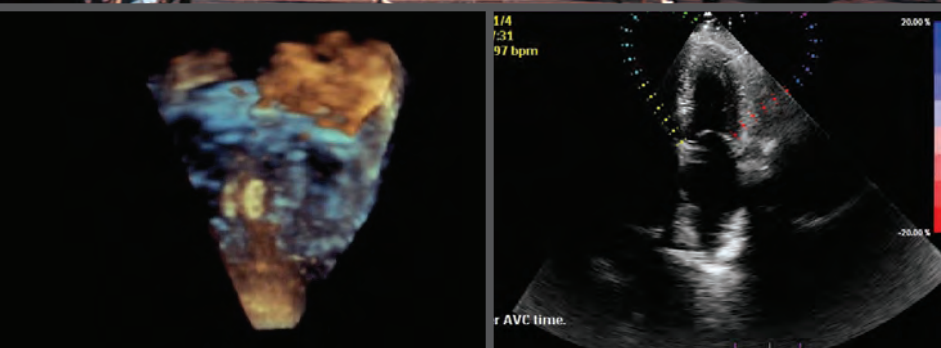


ECHO FLORIDA

A N N U A L



FINAL PROGRAM

October 8–10, 2017

Preconference October 7

**Disney's Yacht & Beach Club Resorts
Walt Disney World®, FL**

Course Director

Gerard P. Aurigemma, MD, FASE
UMass Memorial Medical Center
Worcester, MA

Course Co-Director

Linda D. Gillam, MD, FASE
Past President, ASE
Morristown Medical Center
Morristown, NJ

Learning Lab Director

Deborah A. Agler, ACS, RDCS, FASE
Cleveland Clinic
Cleveland, OH

Welcome Message and Faculty

Welcome Message

Welcome to the American Society of Echocardiography's (ASE) 6th Annual Echo Florida course. Linda Gillam, Debbie Agler, and I, along with the rest of our expert faculty, hope to provide you with a program which builds on the successes of the prior five courses led by Mike Picard and Rebecca Hahn. As in the past, the goal of Echo Florida was to introduce the newest applications of echocardiography while also emphasizing the applications of basic and advanced echo to daily practice. This year, we would also like to introduce a new goal of giving the audience insight into how the faculty evaluates echo data as applied to clinical cardiology. Accordingly we have added a number of sessions where faculty present recent cases that have challenged them, and discuss them with other panelists.

In overview, Saturday will feature a preconference learning lab. (An additional fee is required. Check with the registration desk for availability.) In response to feedback from Echo Florida 2016 attendees, we will devote the entire morning session to the analysis of left ventricular function by strain imaging, using didactic sessions, case reviews, and hands-on strain computations, led by our team of experts. The afternoon session will focus on 3D echocardiography. This 3D workshop will comprise both live scanning and computer-based sessions focusing on 3D acquisition techniques, as well as cropping and image display. Our hope is that participants will gain an enhanced knowledge of 3D quantification of ventricular size and function, as well as valvular morphology and function.

Our main course, Sunday through Tuesday, will focus on the application of echocardiography in valve disease, coronary artery disease, heart failure, and a variety of clinical scenarios. We start with a review of general echocardiography, covering the recent guidelines published by ASE. During the valvular heart disease sessions we will cover the hemodynamic assessment of valve disease and also introduce attendees to the role of echocardiography in structural heart disease interventions. Recognizing the importance of multimodality imaging in clinical practice, we have included several sessions which will review important contemporary applications of cardiac mitral regurgitation.

The final day will cover important clinical areas in echocardiography with relevant topics such as congenital heart disease, athlete's heart, cardio-oncology, and pulmonary hypertension. Case-based sessions throughout the conference will help highlight the teaching points of the lecture-based presentations. We will engage the audience by using the ASE Courses app to ask you questions during the presentations, as well as give you the opportunity to ask questions of the faculty during the sessions. We have also added some sessions where our expert faculty will "let their hair down" (those who still have some!) and show recent cases from which they have learned (sometimes painful) lessons.

John Gorcsan, the "Alex Trebek of Echocardiography," has prepared an entertaining echo quiz show for Monday afternoon, which should be a real hoot!

Welcome to Orlando. It is a great place to bring your family for fun and entertainment. We hope that Echo Florida will become one of your favorite ASE courses.



Course Director
Gerard P. Aurigemma,
MD, FASE
UMass Memorial
Medical Center
Worcester, MA



Course Co-Director
Linda D. Gillam, MD, FASE
Past President, ASE
Morristown Medical Center
Morristown, NJ



Learning Lab Director
Deborah A. Agler,
ACS, RDCS, FASE
Cleveland Clinic
Cleveland, OH

Faculty

Doreen Defaria Yeh, MD
Massachusetts General Hospital
Boston, MA

Steven A. Goldstein, MD, FASE
MedStar Washington Hospital Center
Washington, DC

John Gorcsan III, MD, FASE
Washington University in St. Louis
St. Louis, MO

Rebecca T. Hahn, MD, FASE
Columbia University Medical Center
New York, NY

Omar K. Khalique, MD, FASE
Columbia University Medical Center
New York, NY

Matthew Parker, MD
UMass Memorial Medical Center
Worcester, MA

Muhammed Saric, MD, PhD, FASE
New York University
New York, NY

Vincent L. Sorrell, MD, FASE
University of Kentucky
Lexington, KY

Wendy Tsang, MD
University of Toronto
Toronto, Ontario, Canada

Seth Uretsky, MD
Morristown Medical Center
Morristown, NJ

Program Information

Overview of Echo Florida

The Echo Florida course is a comprehensive review of cardiovascular ultrasound in clinical practice. The faculty is composed of experts who will discuss the strengths and limitations of established and emerging technologies and illustrate how these technologies can be used to improve and streamline patient care in a cost-conscious manner.

Target Audience

This course is designed for adult and pediatric cardiologists, cardiovascular surgeons, cardiovascular anesthesiologists, cardiac radiologists, fellows in training, cardiovascular sonographers, cardiovascular nurse specialists, internists, intensivists, and emergency physicians with special interest in clinical cardiology and echocardiography.

Learning Objectives

Learning Lab (Preconference)

Upon completion of these sessions, participants will be better able to:

1. Perform strain measurements and understand their applications.
2. Demonstrate ability to crop and display 3D echocardiographic data sets.

Main Conference

Upon completion of these sessions, participants will be better able to:

1. Analyze and quantify systolic and diastolic function by echocardiography.
2. Recognize indications for echocardiographic contrast agents.
3. Interpret stress echocardiograms.
4. Appropriately utilize echocardiography in infective endocarditis.
5. Quantify valvular regurgitation.
6. Classify cardiomyopathies by echocardiography.
7. Identify eligible patients for transcatheter aortic valve replacement.
8. Recognize and assess the function of percutaneous cardiac devices by echocardiography.
9. Describe echocardiographic features of common complex congenital lesions found in adults.
10. Explain normal and abnormal findings of prosthetic valve function.
11. Understand the limitations of echocardiography and better understand when complementary modalities like cardiac MR should be considered.

Preconference Learning Lab

(Additional fee required. Please visit the ASE registration desk to check availability.)

This learning lab is offered on Saturday, October 7. It requires a separate registration fee and is included in the total hours of educational content offered at the course.

Strain Workshop

This session will briefly review the assessment of systolic function by echocardiography and the emerging role of strain. Through a combination of case reviews and hands-on computations using laptops pre-loaded with strain cases, the audience will become better acquainted with the fundamentals of strain imaging. An emphasis will be placed on technical aspects of strain measurements as well as tips on how to optimize echo data acquisition for strain analysis. Several of the commercially available software packages will be utilized during this session.

3D Workshop

The 3D workshop will be a combination of live scanning and computer based sessions focusing on 3D acquisition techniques, as well as cropping and image display. After introductory lectures and live scanning, the session will break into a workshop with different 3D vendors. There will be limited numbers of laptops pre-loaded with 3D examples for hands-on learning. This workshop will cover 3D quantification of ventricular size and function, as well as valvular morphology and function.



Program Information

Disclaimer

The information provided during this CME activity is for continuing education purposes only and is not meant to substitute for the independent medical judgment of a healthcare provider relative to diagnostic and treatment options of a specific patient's condition.

Accreditation and Designation

This activity has been planned and implemented in accordance with the Essential Areas and Policies of the Accreditation Council for Continuing Medical Education (ACCME) through the joint providership of the American Society of Echocardiography and the American Society of Echocardiography Education and Research Foundation. The American Society of Echocardiography is accredited by the ACCME to provide continuing medical education for physicians.

The American Society of Echocardiography designates this live activity for a maximum of **29.25 AMA PRA Category 1 Credits™**, for attending both the Main Conference and Learning Lab.

ASE designates the Echo Florida Learning Lab for maximum of 8.25 hours and a maximum of 21 hours for the Main Conference. Attendees should claim only the credit commensurate with the extent of their participation in the activity.

Daily breakdown of CME credits:

Saturday, October 7 Learning Lab = 8.25 hours

Sunday, October 8 = 7.25 hours

Monday, October 9 = 7.25 hours

Tuesday, October 10 = 6.5 hours

Successful completion of this CME activity enables the participant to earn a up to **29.25 MOC points in the American Board of Internal Medicine's (ABIM) Maintenance of Certification (MOC) program**. Participants will earn MOC points equivalent to the amount of CME credits claimed for the activity. It is the CME activity provider's responsibility to submit participant completion information to ACCME for the purpose of granting ABIM MOC credit.



ARDMS, CCI, and Sonography Canada recognize ASE's certificates and have agreed to honor the credit hours toward their registry requirements for sonographers.

All or a portion of this educational activity may meet the CME requirement for IAC Echocardiography accreditation.

This activity is eligible for Section 1 credits in the Royal College of Physicians and Surgeons of Canada's Maintenance of Certification (MOC) Program. Participants must log into MAINPORT to claim this activity

Disclosure

ASE is committed to ensuring that its educational mission, and all sponsored educational programs are not influenced by the special interests of any corporation or individual, and its mandate is to retain only those speakers whose financial interests can be effectively resolved to maintain the goals and educational integrity of the program. While a monetary or professional affiliation with a corporation does not necessarily influence a speaker's presentation, the Essential Areas and policies of the ACCME require that any relationship that could possibly conflict with the educational value of the program be resolved prior to the educational session and disclosed to the audience. In accordance with these policies, ASE implemented mechanisms prior to the planning and implementation of this CME activity to identify and resolve conflicts of interest for all individuals in a position to control content. Disclosure information is referenced and can be found beginning on page 11 of this program.

Commercial Support Disclosure Statement

In-Kind Donations: This activity is supported in part by in-kind donations of devices or software from GE Healthcare, Philips, Siemens Healthineers, and TOMTEC.

Educational Grants: This activity is supported in part by unrestricted educational grants from Abbott Vascular, Biosense Webster, Edwards Lifesciences, GE Healthcare, Lantheus Medical Imaging, and Medtronic.

How to Obtain Credit

To claim your CME for Echo Florida, please follow the steps below using your Mozilla Firefox, Google Chrome, or Safari browser. **Internet Explorer will not work.** The deadline to claim credit is **November 17, 2017**.

1. **ASE Members:** Go to ASEcho.org and log on to the Member Portal with your username (email) and password.
 - a. Click on ASEUniversity and CME Credits (This will take you directly to your ASEUniversity member profile).
2. **Nonmembers:** Go to ASEUniversity.org and create a new account or log into your existing account.
3. Once logged into ASEUniversity, click **My Account** at the top right.
4. From the left side menu, click on **Add Access Code** and enter the code "**FLORIDA2017**"
5. Verify your registration information. Please be sure to use the same information that you used to register for the event.
6. Once verified, click **Take Evaluation** to claim your CME credit. CME credits are not earned until the entire evaluation has been completed.
 - a. Remember to enter your ABIM number and birth date if you choose to have MOC points for this meeting submitted to ABIM. There is a space for this information on the first page of the evaluation.
7. Your certificate will be available for immediate download and can also be found under **My Account** in **My Transcript**.

Attendee Information and Regulations

Registration Location and Hours

The ASE Registration desk is located in the Asbury Rotunda, located in the Disney Yacht & Beach Club Resort's Convention Center. All meeting functions will take place in the Convention Center. ASE staff will be happy to renew your ASE membership or discuss the wide variety of educational products available to you. ASE Members receive a significant discount on DVD's, books, and more. The Registration desk will be staffed during the following hours:

Saturday, October 7, 2017 7:00 AM–5:15 PM

Sunday, October 8, 2017 7:00 AM–4:45 PM

Monday, October 9, 2017 7:00 AM–5:00 PM

Tuesday, October 10, 2017 7:00 AM–4:00 PM

Food Functions

ASE will provide breakfast and coffee breaks for all registered attendees in Asbury Hall. Please refer to the program schedule beginning on page 7 for the times.

ASE will provide lunch to all registered Learning Lab attendees on Saturday, October 7 in Asbury Hall. Lunch will be provided to all registered attendees of the main conference Sunday-Tuesday in Asbury Hall.

Disney's Yacht & Beach Club Resort offers their guests a variety of dining options. Please see page 6 for more details.

Internet Access

There is complimentary wireless internet available throughout the Disney's Yacht & Beach Club Resorts. Attendees of this course also receive complimentary wireless internet in their guest rooms.

Business Center

The Business Center is located in the Convention Center and is open daily. It offers fax, photo-copier, mail, and computer services.

Safety

Audience seating is on a first-come, first-served basis. According to fire code, a session must be closed if the room fills to capacity. Inappropriate behavior or undesirable conduct, including, but not limited to, verbal or physical abuse, whether threatened or performed, will not be permitted or tolerated. You must wear your name badge at all times when attending the session or events.

Photography/AV Policy

No person may record any portion of the ASE Echo Florida Course, either by video, still or digital photography, audio or any other recording or reproduction mechanism. This includes recording of presentations and supporting audio visual materials. Taking photos of, or recording the content of, presentation slides is also prohibited and is considered intellectual piracy. Attendees who ignore this policy will be asked to leave the educational session and are at risk of losing their name badge and attendance privileges. Photographs taken for the purpose of sharing on social media is allowed, but should avoid showing presentation slides. Please use #EchoFlorida when posting on social media. ASE reserves the rights to all recordings or reproductions at ASE meetings. Please be aware that during the ASE Echo Florida Course, attendees, vendors, guests, and exhibitors may be photographed or videotaped by ASE staff capturing the event. Some of these photographs or videos may be displayed by ASE in future publication or other materials. By virtue of your attendance, you agree to allow ASE to use photographs of you in its promotional materials.

Children

ASE does not offer childcare services. Due to limited seating capacity and the highly technical nature of this program, children are not allowed to attend the educational session.

Mobile Device Use

We encourage you to use your mobile device to download the new ASE Courses app. After you have downloaded the app, you will have access to the entire meeting program at your fingertips. You can also use the app to ask questions during the sessions you attend. Please remember to turn your mobile device to silent or vibrate mode.

Search "ASE Courses" in the Google Play and Apple Stores to download.



Location Information

Disney's Yacht & Beach Club Resort

Delight in the formal grace of a grand New England-style yacht club at this lakeside hotel. Relax in the inviting elegance of a plush lobby replete with nautical touches, explore the whimsical Stormalong Bay and rent a variety of watercraft from Bayside Marina. Sharing many amenities with its pastel-toned sister, Disney's Beach Club Resort, Disney's Yacht Club Resort is walking distance to *Epcot*® and a convenient boat ride to *Disney's Hollywood Studios*®.

Special Features: Beachside Water Recreation Area: Make a splash at Stormalong Bay, a three-acre water wonderland! Climb the mast of a life-size shipwreck to breeze down one of the highest hotel waterslides at Walt Disney World Resort. Catch currents in the lazy circular river, relax in one of three whirlpool spas and soak up the sun on the elevated tanning deck. Children can enjoy the gently sloping, beach entry and have a blast in the kiddie pool—complete with a miniature waterslide.

Extend Your Stay: Once you arrive, you will discover the Walt Disney World® Resort offers more magical experiences than you ever dreamed possible. Don't pass up the chance to add an extra few days before or after your meetings for a spectacular golf or spa getaway or the perfect vacation with family and friends. Disney's Yacht & Beach Club Resort will extend the same room rates* to any nights you add to your visit.

Make Time for the Magic!

As a Disney Resort Guest, you will enjoy special benefits that make your Walt Disney World® stay easier and more relaxing than ever. These benefits provide everything from extra time in the Theme Parks and convenient transportation to more magic all around.

Purchase Theme Park Tickets in Advance

Available only to meeting attendees, their guests, and family members, Disney's multi-day and half-day Meeting/Convention tickets are designed to fit any agenda and can't be purchased at the Theme Park gates. To receive these special Theme Park tickets, you must purchase online at MyDisneyGroup.com/Echo17 or call 407-939-4686.

Enhanced! *Extra Magic Hour* Benefit

Each day one of the Theme Parks opens an hour early or stays open up to three hours after regular Park hours for guests staying at select Disney Resorts, giving you even more time to enjoy select attractions before and after your meetings. This is a great way for you to maximize the value of your Disney Theme Park Tickets based around your schedule! *Valid Theme Park admission and Walt Disney World® Resort ID are required.*

Convenient *Walt Disney World*® Transportation

If you are arriving by air at Orlando International Airport, Disney's legendary service starts the moment you touch down and continues throughout your stay. ***Disney's Magical Express*®** — Take advantage of the latest innovation in Disney's legendary commitment to service and convenience. This exclusive complimentary shuttle and luggage delivery service conveniently takes you from the airport directly to your Disney Resort and back again when it's time to return. It's the hassle-free benefit that allows you to arrive at your meeting relaxed and stress-free. To book, call 407-939-4686 or visit MyDisneyGroup.com/Echo17 for more information.

During your stay, enjoy the convenience of Disney transportation throughout the Walt Disney World® Resort. Just steps from your door, boats and motor coaches are waiting to take you to and from the Theme Parks, Water Parks, the Downtown Disney® area and more.

Dining Options

In addition to the options listed below, several quick service restaurants and lounges are available to you at the resort. In room dining is available 24 hours a day.

Yachtsman Steakhouse: Savor premium steaks, fresh seafood and more at this family-friendly, New England-style steakhouse. Within the airy dining room's knotty-pine beams and nautical touches, mouthwatering cuisine awaits. Advanced reservations recommended.

Beaches & Cream Soda Shop: Good times and great eats are a "shore" thing at this old-fashioned soda fountain also featuring American grill favorites. Revel in the nostalgia of the Atlantic seashore at this boardwalk-style ice cream shop where every day is sundae.

Cape May Cafe: Join some favorite Disney Characters for a lively morning meal at this charming beach-themed café. Or, join them for a dinner seafood-and-more buffet offers a mouthwatering array of clams, mussels, crab legs, shrimp, ribs, chicken and more. Advanced reservations recommended.

Captain's Grille: Temporarily located at Ariel's (also in the resort) due to renovations, Captain's Grille still promises Eastern Seaboard fare and grill favorites your whole crew will love. You'll be immersed in an enchanting underwater setting with colorful coral and fish sculptures, and hand-blown glass bubbles. This light-filled venue also features a poolside views, and is just a short walk away from the marina. Advanced reservations recommended.

Schedule of Events

Saturday, October 7, 2017

Preconference Learning Lab *(Additional Fee Required)*

Grand Harbor Ballroom South

Strain Workshop

7:00 AM	Breakfast Asbury Hall
7:45 AM	Introduction to the Learning Lab <i>G. Aurigemma</i>
7:55 AM	Basic Left Ventricular Function <i>G. Aurigemma, V. Sorrell</i>
8:15 AM	Introduction to Strain: Theory and Applications <i>J. Gorcsan</i>
8:55 AM	Optimizing Imaging for Strain <i>D. Agler, J. Gorcsan</i>
9:55 AM	Refreshment Break Asbury Hall
10:25 AM	Workshop: Review of Strain Cases <i>G. Aurigemma, J. Gorcsan, V. Sorrell</i>
12:25 PM	Lunch and Visit Exhibits Asbury Hall

3D Workshop

1:25 PM	Introduction of Learning Lab <i>G. Aurigemma</i>
1:35 PM	Cardiac Anatomy: Learning the Basics for 3D <i>R. Hahn</i>
2:05 PM	Live Scanning: 3D Acquisition <i>W. Tsang</i>
2:45 PM	Refreshment Break Asbury Hall
3:00 PM	Valvular Quantification: The Impact of 3D for Valvular Morphology and Function <i>R. Hahn</i>
3:25 PM	Hands-on Workshop: Vascular Quantification <i>O. Khalique</i>
4:15 PM	Hands-on Workshop: Quantification of Chambers <i>R. Hahn, O. Khalique, M. Parker, W. Tsang</i>
5:15 PM	Adjourn

Sunday, October 8, 2017

General Echocardiography Grand Harbor Ballroom South

Moderator: *L. Gillam*

7:00 AM	Breakfast and Visit Exhibits Asbury Hall
7:45 AM	Welcome <i>G. Aurigemma</i>
7:50 AM	Past President's Address <i>L. Gillam</i>
8:00 AM	Chamber Quantification Guidelines Update I: Left Heart Measurements <i>D. Agler, L. Gillam</i>
8:25 AM	Chamber Quantification Guidelines Update II: Right Heart Measurements <i>D. Agler, S. Goldstein</i>
8:45 AM	Strain Imaging: Myocardial Mechanics Simplified and Applied <i>J. Gorcsan</i>
9:15 AM	2016 ASE Diastolic Function Guidelines: Relax! <i>G. Aurigemma</i>
9:40 AM	Optimizing Echo Acquisition for Strain and Diastology <i>D. Agler</i>
10:05 AM	Question and Answer
10:15 AM	Refreshment Break and Visit Exhibits Asbury Hall
10:45 AM	Strain Cases: Where it Makes a Difference in 2017 <i>G. Aurigemma, J. Gorcsan, V. Sorrell</i>
11:10 AM	3D Echo: Acquisition, Cropping, and Display <i>W. Tsang</i>
11:30 AM	Cases: 3D Application in Practice <i>R. Hahn, W. Tsang</i>
11:50 AM	Goofs, Coups, and Things I Have Learned in the Past Year: Part 1 <i>G. Aurigemma, L. Gillam, R. Hahn, W. Tsang</i>
12:10 PM	Lunch and Visit Exhibits Asbury Hall
1:10 PM	Multimodality Imaging of Diseases of the Thoracic Aorta in Adults <i>S. Uretsky</i>
1:30 PM	Guidelines for the Use of Echocardiography in the Evaluation of a Cardiac Source of Embolism <i>M. Saric</i>
1:50 PM	Clinical Recommendations for Multimodality Cardiovascular Imaging of Patients with Pericardial Disease <i>S. Goldstein</i>

Schedule of Events

2:10 PM	Expert Consensus for Multimodality Imaging Evaluation of Adult Patients During and After Cancer Treatment <i>V. Sorrell</i>
2:30 PM	Refreshment Break and Visit Exhibits Asbury Hall
3:00 PM	Regurgitant Valvular Quantitation: What is New in the Guidelines <i>R. Hahn</i>
3:20 PM	Where Contrast Administration Makes a Difference <i>L. Gillam</i>
3:40 PM	Stress Echo Cases: Are You As Good As The Experts? <i>M. Saric, V. Sorrell</i>
4:00 PM	Goofs, Coups, and Things I Have Learned in the Past Year: Part II <i>S. Goldstein, M. Saric, V. Sorrell, S. Uretsky</i>
4:45 PM	Adjourn

Monday, October 9, 2017

Valvular Heart Disease Part I Grand Harbor Ballroom South Moderator: <i>M. Saric</i>	
7:00 AM	Breakfast and Visit Exhibits Asbury Hall
7:45 AM	Basic and Advanced Assessment of Aortic Stenosis <i>R. Hahn</i>
8:20 AM	Low Gradient, Severe Aortic Stenosis: Dobutamine Echo to the Rescue <i>L. Gillam</i>
8:40 AM	Back to Basics: Common Errors in Quantitation in Everyday Practice <i>D. Agler, S. Goldstein, R. Hahn</i>
8:55 AM	Rheumatic and Degenerative, Calcific Mitral Stenosis <i>O. Khalique</i>
9:10 AM	Assessing Prosthetic Valve Function: Differentiating Normal From Stenotic or Regurgitant <i>M. Parker</i>
9:30 AM	Question and Answer
9:50 AM	Refreshment Break and Visit Exhibits Asbury Hall

Valvular Heart Disease Part II Grand Harbor Ballroom South Moderator: <i>R. Hahn</i>	
10:20 AM	A View From the Other Side: Role of MRI in Assessing Valvular Regurgitation <i>S. Uretsky</i>
10:40 AM	Echo in Asymptomatic Mitral Regurgitation and Aortic Regurgitation <i>M. Saric</i>
11:00 AM	Goofs, Coups, and Things I Learned This Past Year: Part III <i>S. Goldstein, M. Parker, M. Saric, S. Uretsky</i>
11:40 AM	Question and Answer
12:00 PM	Lunch and Visit Exhibits Asbury Hall

Heart Failure Grand Harbor Ballroom South Moderator: <i>J. Gorcsan</i>	
1:00 PM	Restrictive and Infiltrative Cardiomyopathy: Recognition By Echo <i>G. Aurigemma</i>
1:20 PM	Hypertrophic Cardiomyopathy <i>L. Gillam</i>
1:40 PM	Cases: Strain in Myocardial Disease <i>J. Gorcsan</i>
2:00 PM	MRI in Myocardial Disease: Where You Must Use It in 2017 <i>V. Sorrell, S. Uretsky</i>
2:20 PM	Question and Answer
2:40 PM	Refreshment Break and Visit Exhibits Asbury Hall
3:10 PM	Cases: Discrepant Valvular Quantification: Stenosis <i>L. Gillam</i>
3:30 PM	Cases: Valvular and Myocardial Disease: Regurgitation <i>G. Aurigemma, O. Khalique</i>
3:50 PM	Stump the Stars: Echo Cases and Discussion <i>G. Aurigemma, L. Gillam, O. Khalique, M. Parker</i>

Fun and Games Grand Harbor Ballroom South	
4:20 PM	Rapid Fire Echo Case Quiz: Everyone Plays! <i>J. Gorcsan</i>
5:00 PM	Adjourn

Schedule of Events

Exhibit Information

Tuesday, October 10, 2017

Clinical Echocardiography Grand Harbor Ballroom South

Moderator: *G. Aurigemma*

7:00 AM **Breakfast and Visit Exhibits**
Asbury Hall

8:00 AM **TAVR: Procedure Guidance By Echo**
M. Saric

8:25 AM **The Forgotten Valve: New Tricuspid Interventions**
R. Hahn

8:50 AM **Percutaneous Mitral Valve Repair**
S. Goldstein

9:10 AM **What I Have Learned from 3D Imaging of Heart Valve Disease**
S. Goldstein, R. Hahn

9:40 AM **Left Atrial Appendage Closure Devices**
M. Saric

10:00 AM **Refreshment Break and Visit Exhibits**
Asbury Hall

10:30 AM **Cases: Interventional Imaging**
S. Goldstein, R. Hahn, M. Parker

11:10 AM **Congenital Heart Disease Part I: The Unrepaired Adult**
D. Defaria Yeh

11:30 AM **Congenital Heart Disease Part II: The Repaired Adult**
D. Defaria Yeh

11:50 AM **Infectious Endocarditis**
S. Goldstein

12:10 AM **Athlete's Heart vs. Cardiomyopathy?**
L. Gillam

12:30 PM **Question and Answer**

1:00 PM **Lunch and Visit Exhibits**
Asbury Hall

2:00 PM **The Role of Echo in Pulmonary Hypertension**
S. Goldstein

2:20 PM **Pregnancy and Heart Disease: The Role of Echo**
D. Defaria Yeh

2:40 PM **Cases: Stress Testing in Valvular Disease**
M. Saric, V. Sorrell

3:00 PM **Cases: Adult Congenital Heart Disease**
D. Defaria Yeh

3:20 PM **Stump the Stars: Echo Cases and Discussion**
G. Aurigemma, S. Goldstein, J. Gorcsan

4:00 PM **Adjourn**

Exhibit Location and Hours

Exhibits are located in the Asbury Hall during the dates and hours listed below.

Saturday, October 7, 2017 7:00 AM–3:00 PM

Sunday, October 8, 2017 7:00 AM–4:45 PM

Monday, October 9, 2017 7:00 AM–5:00 PM

Tuesday, October 10, 2017 7:00 AM–2:00 PM

Exhibitor Descriptions



Bracco Diagnostics
1765 Oakland Drive
Kannapolis, NC 28081
United States
Phone: 1-704-956-6543
usa.braccoimaging.com



Bracco Diagnostics Inc., a U.S.-based subsidiary of Bracco Imaging SpA, is a worldwide provider of diagnostic imaging solutions for use in CT, MR, Nuclear, and most recently for Ultrasound.



DIAGNOSTEMPS
Radiology Staffing

DiagnosTemps
5050 Quorum Drive, Suite 700
Dallas, TX 75254
United States
Phone: 972-934-3674
diagnostemps.com

Headquartered in Dallas, TX, DiagnosTemps is a specialized staffing agency that is committed to providing the highest quality of trusted, on-demand personnel solutions to hospitals, outpatient facilities, surgery centers and physician offices. Established in 1993, DiagnosTemps excels at meeting the temporary staffing needs of healthcare offices throughout the Dallas-Fort Worth area and all across the United States.



Gator Medical Books
10012 Newington Drive
Orlando, FL 32836
United States
Phone: 1-407-370-4648
gatormedicalbooks.com

Medical books from the world's leaders in publishing. Affiliate of Elsevier, Amirsys McGraw Hill, and others.

Exhibit Information



GE Healthcare
9900 Innovation Drive
Wauwatosa, WI 53226
United States
Phone: 414-721-4354
gehealthcare.com



GE's "healthymagination" vision for the future invites the world to join us on our journey as we continuously develop innovations focused on reducing costs, increasing access and improving quality and efficiency around the world. GE Healthcare is committed to serving healthcare professionals and their patients.



Hitachi Healthcare
1959 Summit Commerce Park
Twinsburg, OH 44087
United States
Phone: 800-800-3106
hitachihealthcare.com

Hitachi Healthcare is proud of the reputation we've built as an industry leader in diagnostic ultrasound. Known for unparalleled Doppler performance, superior system reliability and intuitive use of cutting edge technology, Hitachi Healthcare remains the ideal choice for exceptional diagnostic ultrasound imaging. Our focused dedication to diagnostic ultrasound imaging allows us to offer a full range of products to meet the needs for all your Cardiovascular applications.



Lantheus Medical Imaging, Inc.
331 Treble Cove Road
North Billerica, MA 01862
United States
Phone: 800-362-2668
lantheus.com



Lantheus is a global leader in the field of medical imaging. We develop, manufacture and commercialize essential diagnostic imaging agents and products that help healthcare professionals identify disease and improve patient treatment and care. Our pioneering products assist physicians in the diagnosis of conditions affecting the heart, brain, lungs and other organs using echocardiography and nuclear imaging.

PHILIPS

Philips Healthcare
22100 Bothell Everett Highway
Bothell, WA 98031
United States
Phone: 978-284-9980
usa.philips.com/healthcare



Philips is a leader in ultrasound solutions with a large global installed base and strong track record of industry-first innovations in areas such as real-time 3D imaging of the heart, quantification tools driven by Anatomical Intelligence, and ultra-mobile, portable ultrasound solutions. Philips' ultrasound portfolio supports the effective and efficient delivery of care across a broad range of clinical specialties including radiology, cardiology, point-of-care and OB/GYN.



Siemens Healthineers
40 Liberty Boulevard
Malvern, PA 19355
United States
Phone: 610-448-6322
usa.siemens.com/Healthineers



Siemens Healthineers is committed to becoming the trusted partner of healthcare providers worldwide, enabling them to improve patient outcomes while reducing costs. Driven by our legacy of engineering excellence and our pioneering approach, we are a global leader in medical imaging, diagnostics, clinical IT, and services.



UltraLinq Healthcare Solutions, Inc.
236 West 30th Street
New York, NY 10001
United States
Phone: 1-919-360-2037
ultralinq.com

UltraLinq is a cloud-based ultrasound and image management solution that can revolutionize your practice by providing physicians, technologists, and admins, with the most effective and seamless workflow for evaluating, sharing, and archiving your imaging exams and reports. Save time. Save effort. Save money.



Wolters Kluwer

Wolters Kluwer
891 Nonastone Run
Casselberry, FL 32707
United States
Phone: 1-407-312-9523
lww.com

Wolters Kluwer is the proud publisher of the Journals of the American Heart Association, including Circulation: Cardiovascular Imaging. We offer a full range of specialized books, journals and electronic media. Visit us today.

Faculty Disclosures

The following faculty members do not have any relationships with industry/commercial supporters to disclose:

Debora Agler, ACS, RDCS, FASE
Gerard Aurigemma, MD, FASE
Doreen Defaria Yeh, MD
Linda Gillam, MD, FASE
Steven Goldstein, MD, FASE
Matthew Parker, MD
Muhammed Saric, MD, PhD, FASE
Vincent Sorrell, MD, FASE
Wendy Tsang, MD
Seth Uretsky, MD

The following faculty members do have financial relationships with industry/commercial supporters to disclose:

John Gorcsan III, MD, FASE – Medtronic (Research Grant Support, Including PI); Hitachi Aloka (Research Grant Support, including PI); GE (Research Grant Support, Including PI)
Omar Khaliq, MD, FASE – Columbia University Medical Center (Speaker/Speaker's Bureau); Edwards Lifesciences (Speaker/Speaker's Bureau)
Rebecca Hahn, MD, FASE – GE Healthcare (Consultant, Advisor); Philips Healthcare (Consultant, Advisor); Gore & Associates (Consultant, Advisor); Abbott Structural (Consultant Advisor); Edwards Lifesciences (Consultant, Advisor, Speaker/Speaker's Bureau)

The following members of the ASE CME Committee, Education Committee, and Board of Directors (not serving as faculty) do not have any relationships with industry/commercial supporters to disclose:

Karima Addetia, MD; Carolyn Altman, MD, FASE; Bonita Anderson, MAppISC, DMU, AMS, ACS, AFASA, FASE; Frederico Asch, MD, FASE; Louis Bezold, MD, FASE; Lori Blauwet, MD, FASE; Merri Bremer, EdD, RN, RDCS, ACS, FASE; Andra Duncan, MD, FASE; Benjamin W. Eidem, MD, FASE; Tia Gordon, RDCS; Edward Gill, MD, FASE; Brian Holland, MD, FASE; Judy Hung, MD, FASE; Eric Kallstrom, ACS, RDCS, FASE; James Kirkpatrick, MD, FASE; Allan L. Klein, MD, FASE; Rebecca Klug, BA, RT(R), RDCSA, FASE; Chris Kramer, ACS, RDCS, FASE; Aparna Kulkarni, MD; Stephen H. Little, MD, FASE; Feroze Mahmood, MD, FASE; Elizabeth McIlwain, MPH, RCS, FASE; Praveen Mehrotra, MD, FASE; Monica Mukherjee, MD, FASE; Raymond Musarra, RDCS, RCS, FASE; Alina Nicoara, MD, FASE; Maryellen H. Orsinelli, RN, RDCS, FASE; Renee Palmer, MD, FASE; Matthew Parker, MD; Priscilla Peters, BA, RDCS, FASE; Sue D. Phillip, RCS, FASE; Juan Carlos Plana, MD, FASE; Nishath Quader, MD, FASE; Hedda Richards, RDCS, RCS, FASE; Geoffrey Rose,

MD, FASE; Liza Sanchez, RCS, FASE; Elaine Shea, ACS, RCS, RCCS, FASE; Timothy Slesnick, MD, FASE; Gbemiga Sofowora, MD, FASE; Shubhika Srivastava, MD, FASE; Richard Stacey, MD, FASE; Madhav Swaminathan, MD, FASE; Carolyn Taylor, MD, FASE; James D. Thomas, MD, FASE; Richard Weiss, MD, FASE; Bryan Wells, MD, FASE; David Wiener, MD, FASE; Danita Yoerger Sanborn, MD, FASE

The following members of the current ASE CME Committee, Education Committee, and Board of Directors (not serving as faculty) have relationships with industry/commercial supporters to disclose:

Keith Collins, MD, RDCS, FASE – IBM (Stock Ownership)
Sabe De, MD, FASE – Bayer (Speakers Bureau); Astra Zeneca (Speakers Bureau)
Jonathan Lindner, MD, FASE – GE Healthcare (Research Grant Support, Including PI)
William Perez, MD, FASE – Alibaba Holdings (Stock Ownership); Myriad Genetics (Stock Ownership); American Energy Industries (Stock Ownership)
Vera H. Rigolin, MD, FASE – Pfizer (Stock Ownership)
Raymond Stainback, MD, FASE – GE (Stock Ownership)
Douglas Shook, MD, FASE – Edwards Life Sciences (Research Grant Support, Including PI); Liva-Nova (Education); Boston Scientific (Education); Edwards Lifesciences (Consultant/Advisor)
All members of the ASE staff who were involved in the planning and implementation of this activity do not have any relationships with industry/commercial supporters to disclose:
Hilary Lamb, MPA, Chief Operating Officer
Jaclyn Levine, Meeting Planner
Erin McClure, Meetings Department Manager
Christina LaFuria, Director of Education
Mary Lawson, CME Coordinator
Robin Wiegnerink, MNPL, Chief Executive Officer

ECHO FLORIDA

6th ANNUAL

ASE would like to thank our
Industry Roundtable Partners.



PHILIPS

SIEMENS
Healthineers

TOSHIBA
Leading Innovation >>>

Connect with ASE

Join the conversation by using #EchoFlorida

Facebook.com/asecho

@ASE360

The American Society of Echocardiography

@ASE360

Connect.asecho.org

Pinterest.com/ASE360



2530 Meridian Parkway
Suite 450
Durham, NC 27713 USA
Phone: 1-919-861-5574
Fax: 1-919-882-9900
ASEcho.org